



BAND-IT[®]
THE CLAMPING EXPERTS

A UNIT OF **IDEX**
IDEX CORPORATION



**Municipal
Product
Guide**



BAND-IT®
THE CLAMPING EXPERTS

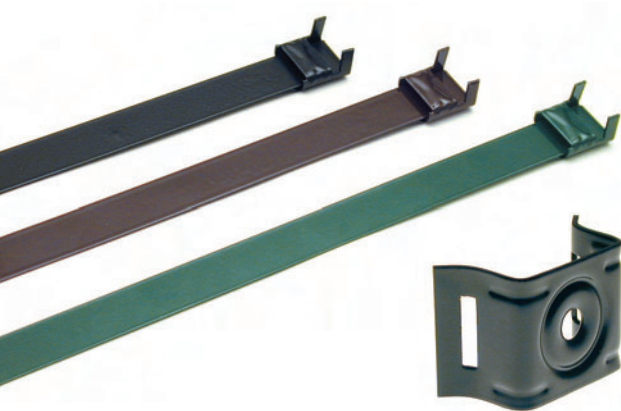
Powder Coated Clamps and Hardware



Before



After



Powder Coated Clamps & Hardware

Durable, color-coordinated powder coated finishes can be applied to many BAND-IT products to match contemporary styles of posts, poles and mounting hardware.





BAND-IT®
THE CLAMPING EXPERTS

Ultra-Lok™ Band Clamping System



The New UL4000 Tool

Benefits of the UL 4000 Band Clamping System

- **Faster** – Field tests confirm Ultra-Lok installations are 4 times faster than traditional Band and Buckle.
- **Versatile** – The UL4000 tensions 3/4" or 1/2" wide single or double wrapped Free End clamps with an optional 1/2" shear plate.
- **Stronger** – Only Ultra-Lok offers high tensile Stainless Steel band which is 25% stronger than typical Municipal steel bands.
- **Tighter** – Increased power and lock under full tension makes UL 4000 installed clamps tighter.
- **Dependable** – The UL4000's charging unit has normal charge and deep cycle switch positions for charging the twin, 18 volt, NICAD power packs.
- **Safer** – A faster, stronger, tighter and easier installation results in less time in the work zone and fewer callbacks.



Predetermined lengths and quantities of 3/4" bands in handy tote dispensers provides faster clamp forming and improved project planning for additional savings.



Predetermined lengths of 1/2" bands are packaged flat in boxes.

- **More Powerful!**
- **Better Balance!**
- **More Compact!**
- **Improved Battery Life!**

UL4000 Battery Powered Installation Tool and Spare 18 Volt Battery Pack

| Cat. No. | Description | Pkg. Qty. | Weight | |
|----------|---|-----------|--------|-----|
| | | | Lbs | Kg |
| UL4000 | Ultra-Lok Free End Tool (complete) | 1 | 9.1 | 4.1 |
| ULK200 | Adapter Kit 1/2"-3/4" Blade Kit Replacement | 1 | .07 | .03 |
| MO9387 | 1/2" Shear Plate for 1/2" UL Clamps | 1 | .01 | – |

Ultra-Lok® Free End Clamps

Type 201 1/4 Hard Stainless Steel Band

Band Width: 3/4" (19.1 mm)

| Cat No. | Diameter (In) | | Length (In) | Bands/Tote Qty. | Weight | |
|---------|---------------|-----------|-------------|-----------------|--------|-----|
| | Sgl. Wrap | Dbl. Wrap | | | Lbs | Kg |
| UL2020 | 4.5 | none | 20 | 30 | 4.3 | 2.0 |
| UL2024 | 5.0 | 2.5 | 24 | 25 | 4.3 | 2.0 |
| UL2028 | 6.0 | 3.0 | 28 | 21 | 4.2 | 2.0 |
| UL2030 | 6.5 | 3.0 | 30 | 20 | 4.3 | 2.0 |
| UL2036 | 8.0 | 4.0 | 36 | 33 | 8.2 | 3.7 |
| UL2040 | 9.0 | 4.5 | 40 | 30 | 8.2 | 3.7 |
| UL2044 | 10.0 | 5.0 | 44 | 27 | 8.2 | 3.7 |
| UL2052 | 13.0 | 6.0 | 52 | 23 | 8.2 | 3.7 |
| UL2060 | 15.0 | 7.0 | 60 | 20 | 8.2 | 3.7 |
| UL2068 | 17.0 | 8.0 | 68 | 18 | 8.2 | 3.7 |
| UL2072 | 18.0 | 9.0 | 72 | 17 | 8.2 | 3.7 |
| UL2080 | 21.0 | 10.0 | 80 | 15 | 8.2 | 3.7 |
| UL2092 | 24.0 | 12.0 | 92 | 13 | 8.2 | 3.7 |
| UL2100 | 26.0 | 13.0 | 100 | 12 | 8.2 | 3.7 |
| UL2120 | 32.0 | 16.0 | 120 | 10 | 8.2 | 3.7 |

Sizes above 36" are in 100' rolls. Smaller sizes are in 50' rolls.

* Other sizes available up to 100' - call Denver

Band Width: 1/2" (12.7mm)

| (requires optional MO9387 Shear Plate) | | | | Bands/box | | |
|--|-----------|-----------|-------------|-----------|------|-----|
| Cat No. | Sgl. Wrap | Dbl. Wrap | Length (In) | Bands/box | Lbs | Kg |
| UL1018 | 3.0 | - | 18 | 50 | 4.1 | 1.9 |
| UL1024 | 5.0 | 2.5 | 24 | 50 | 5.3 | 2.4 |
| UL1028 | 6.0 | 3.0 | 28 | 50 | 6.4 | 2.9 |
| UL1032 | 7.0 | 3.5 | 32 | 50 | 7.2 | 3.3 |
| UL1036 | 8.0 | 4.0 | 36 | 50 | 8.0 | 3.6 |
| UL1046 | 11.0 | 5.5 | 46 | 25 | 5.9 | 2.7 |
| UL1056 | 14.0 | 7.0 | 56 | 25 | 7.1 | 3.2 |
| UL1070 | 18.0 | 9.0 | 70 | 25 | 8.5 | 3.9 |
| UL1086 | 22.0 | 11.0 | 86 | 25 | 10.2 | 4.6 |
| UL1096 | 25.0 | 12.5 | 96 | 25 | 11.2 | 5.1 |
| UL1106 | 28.0 | 14.0 | 106 | 25 | 12.7 | 5.8 |
| UL1116 | 31.0 | 15.5 | 116 | 25 | 13.3 | 6.0 |

Ultra-Lok® Free End Buckles

Type 201 Stainless Steel

| Cat. No. | Description | Pkg. Qty. | Weight | |
|----------|--|-----------|--------|-----|
| | | | Lbs | Kg |
| UB256 | Used to form 3/4" Ultra-Lok Free-End Clamps | 100 | 3.7 | 1.7 |
| UB254 | Used to form 1/2" Ultra-Lok Free-End Clamps (requires optional MO9387 Shear Plate) | 100 | 2.4 | 1.1 |



BAND-IT Band BAND-IT Totes

EASY SCALE BAND-IT Buckles



BAND-IT Totes

BAND-IT Band

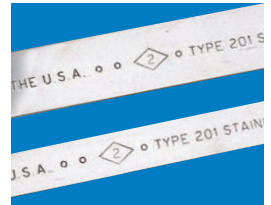
BAND-IT Band in Type 201 stainless steel has been the industry standard for over 60 years with its superior yield and tensile strength properties for maximum clamping strength. And product innovations such as BAND-IT Totes and patented EASY SCALE make the BAND-IT Band Clamping System better than ever. All BAND-IT sizes feature fully rounded smooth edges for safety and easy installation. **For clamps of even greater strength, use a double wrap, threading the Ear-Lokt Buckle each time around.**

BAND-IT Totes

Our world-famous 201 stainless steel band is now available in handy, waterproof plastic packaging. Color-coded for easy identification, these tough, new Totes feature a convenient carrying handle, and a see-through design to show remaining band.

EASY SCALE

Takes the guesswork out of clamping! EASY SCALE - a patented imprint right on the band - eliminates costly waste and complicated measuring by allowing users to quickly and precisely roll out the exact length of band needed for any clamp.



BAND-IT Band - Now with EASY SCALE imprint

100 Ft. Per Roll (30.5M)

Type 201 Stainless Steel

| Cat. No. | Width | | Thickness | | Weight | |
|----------|--------|-------|-----------|-----|--------|-----|
| | Inches | mm | Inches | mm | Lbs | Kg |
| C204 | 1/2 | 12.70 | .030 | .76 | 5.1 | 2.3 |
| C205 | 5/8 | 15.88 | .030 | .76 | 6.4 | 2.9 |
| C206 | 3/4 | 19.05 | .030 | .76 | 7.7 | 3.5 |

Also available in mill coil lengths.

All sizes available in standard cardboard packaging.

Type 201SS available in plastic Tote packaging.

BAND-IT Totes

100 Ft. Per Roll (30.5M)

Type 201 Stainless Steel

BAND-IT Totes (complete with band)

| Cat. No. | Description | Width | | Thickness | | Weight | |
|----------|-------------------------|--------|-------|-----------|-----|--------|-----|
| | | Inches | mm | Inches | mm | Lbs | Kg |
| C204B | 1/2" Band in Blue Tote | 1/2 | 12.70 | .030 | .76 | 5.56 | 2.5 |
| C205G | 5/8" Band in Green Tote | 5/8 | 15.88 | .030 | .76 | 6.85 | 3.1 |
| C206R | 3/4" Band in Red Tote | 3/4 | 19.05 | .030 | .76 | 8.16 | 3.7 |

Galvanized Carbon Steel can be special ordered in plastic totes



BAND-IT Buckles

Ear-Lokt Buckles in Type 201 stainless steel are designed to accommodate both single and double wrap clamps. The unique teeth and ears provide for maximum clamping strength.

BAND-IT Buckles

Package Quantity - 100

Type 201 Stainless Steel

| Cat. No. | Width | | Weight | |
|----------|--------|-------|--------|-----|
| | Inches | mm | Lbs | Kg |
| C254 | 1/2 | 12.70 | 2.1 | 1.0 |
| C255 | 5/8 | 15.88 | 2.4 | 1.1 |
| C256 | 3/4 | 19.05 | 3.7 | 1.7 |



BAND-IT®
THE CLAMPING EXPERTS

Valustrap Plus™ Valuband Scru-Lokt™ Buckles

Strapping and Clips

BAND-IT's austenitic, non-magnetic stainless steel strapping and The Bantam Tool are used for securing signs. Available in 100' and 200' rolls. Inquire about mill coil lengths.

Valustrap Plus™

Use this medium duty strapping to mount traffic signs, commercial signs, holiday decorations and for other purposes where extra strength is needed.

Valuband

Use this heavier strapping when additional strength is needed.

Valustrap Plus .020" (.51 mm) Thick

200 - 300 Stainless Steel

| 100 Ft. Roll (30.5M) | | | 200 Ft. Roll (61M) | | |
|----------------------|-------|----------|--------------------|--------|-----|
| Width | | Cat. No. | Cat. No. | Weight | |
| Inches | mm | | | Lbs | Kg |
| 1/2 | 12.70 | C181 | C128 | 3.8 | 1.7 |
| 5/8 | 15.88 | C171 | C129 | 5.6 | 2.6 |
| 3/4 | 19.05 | C161 | C130 | 5.7 | 2.5 |

Available in mill coil lengths. 300 Ft. Rolls available by special order.

Valuband .025" (.64 mm) Thick

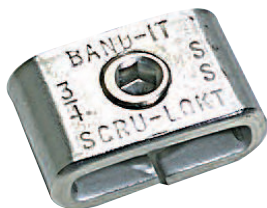
200 - 300 Stainless Steel

| 100 Ft. Roll (30.5M) | | | Weight | |
|----------------------|-------|----------|--------|-----|
| Width | | Cat. No. | Lbs | Kg |
| Inches | mm | | | |
| 1/2 | 12.70 | C144 | 4.5 | 2.0 |
| 5/8 | 15.88 | C145 | 5.6 | 2.6 |
| 3/4 | 19.05 | C146 | 6.7 | 3.0 |

300 Ft. Rolls available by special order.



Band-It
EarLokt
Buckle



Scru-Lokt Buckle

Scru-Lokt Buckles

In this application, BAND-IT Band is secured in the buckle with a set screw. A hex wrench for this purpose comes with the buckles. Use Scru-Lokt Buckles when close quarters will not permit the roll-over action of the BAND-IT Tool, or when a temporary or adjustable clamp is desired. Scru-Lokt clamps are reusable, and may be retensioned.

Scru-Lokt Buckles

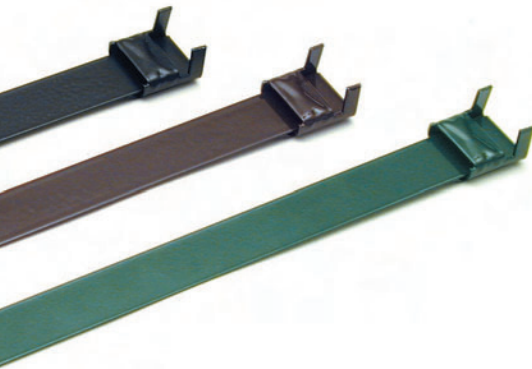
| Stainless Steel | | Size | | Pkg Qty | Weight | |
|-----------------|--|--------|-------|---------|--------|----|
| Cat. No. | | Inches | mm | | Lbs | Kg |
| C724 | | 1/2 | 12.70 | 25 | .5 | .2 |
| C725 | | 5/8 | 15.88 | 25 | .8 | .4 |
| C726 | | 3/4 | 19.05 | 25 | .9 | .4 |

Free-End Clamps

Free-End Clips



Free-end clamp



Free-End Clamps

These pre-assembled Free-End clamps are the practical choice when clamps needed will be of the same size. These clamps may be single wrapped or, for extra strength, double wrapped. Apply with C001, C003, C075, or C400 tools.

Free-End clamps can be special ordered with a durable baked on painted finish to match decorate poles and mast arms. Call Denver for details.

Free-End Clamps

Stainless Steel Type 201

| Cat. No. | Max Dia Once Around | | Max Dia Twice Around | | Total Length (4" required for tool gripping) | | Band Width | | Band Thickness | | Pkg Qty | Weight | |
|-------------|------------------------|-----|-------------------------|-----|--|-----|---------------|-------|-------------------|-----|------------|--------|-----|
| | Inches | mm | Inches | mm | Inches | cm | Inches | mm | Inches | mm | | Lbs | Kg |
| L242 | 4 | 101 | 2 | 50 | 18 | 45 | 1/2 | 12.70 | .030 | .76 | 100 | 10.5 | 4.8 |
| L263 | 5 | 127 | 2 1/2 | 63 | 21 | 53 | 5/8 | 15.88 | .030 | .76 | 100 | 15.1 | 6.8 |
| L284 | 6 | 152 | 3 | 76 | 24 | 60 | 3/4 | 19.05 | .030 | .76 | 50 | 10.9 | 4.9 |
| L246 | 8 | 203 | 4 | 101 | 31 | 78 | 1/2 | 12.70 | .030 | .76 | 25 | 4.7 | 2.1 |
| L288 | 10 | 254 | 5 | 127 | 37 | 93 | 3/4 | 19.05 | .030 | .76 | 25 | 7.6 | 3.5 |
| L290 | 14 | 355 | 7 | 177 | 50 | 127 | 3/4 | 19.05 | .030 | .76 | 25 | 9.7 | 4.4 |
| L271 | 16 | 406 | 8 | 203 | 56 | 142 | 5/8 | 15.88 | .030 | .76 | 25 | 9.0 | 4.1 |
| L292 | 18 | 457 | 9 | 228 | 62 | 157 | 3/4 | 19.05 | .030 | .76 | 25 | 11.6 | 5.3 |
| L273 | 20 | 508 | 10 | 254 | 69 | 175 | 5/8 | 15.88 | .030 | .76 | 25 | 10.7 | 4.8 |

Other Free-End clamp sizes and metals are available. Call Denver for details.



Free-End Clip

Free-End Clips

These stainless steel clips may be used with BAND-IT Band.

Free-End Clips

Stainless Steel Type 201

Package Quantity - 100

| Cat. No. | Size | | Weight | |
|-------------|--------|-------|--------|-----|
| | Inches | mm | Lbs | Kg |
| L154 | 1/2 | 12.70 | 1.5 | .7 |
| L155 | 5/8 | 15.88 | 1.8 | .8 |
| L156 | 3/4 | 19.05 | 2.6 | 1.2 |



Galvanized Carbon Steel BAND-IT Band

Galvanized Carbon Steel BAND-IT Buckles



Galvanized Carbon Steel BAND-IT Band

Galvanized Carbon Steel BAND-IT Band is used in applications which do not demand high strength or corrosion protection. Galvanized carbon steel band has the additional benefit of providing a finish which can be painted to match mast arm or pole colors.



Galvanized Carbon Steel BAND-IT Buckles

Galvanized Carbon Steel Ear-Lokt BAND-IT Buckles are used with Galvanized Carbon Steel BAND-IT Band, and may be single or double wrapped.



C001 Tool

Galvanized Carbon Steel BAND-IT Band

100 Ft. Per Roll (30.5M)

| Cat. No. | Width | | Thickness | | Weight | |
|----------|--------|-------|-----------|-----|--------|-----|
| | Inches | mm | Inches | mm | Lbs | Kg |
| C304 | 1/2 | 12.70 | .030 | .76 | 5.1 | 2.4 |
| C305 | 5/8 | 15.88 | .030 | .76 | 6.4 | 3.0 |
| C306 | 3/4 | 19.05 | .030 | .76 | 7.7 | 3.6 |

Also available in mill coil lengths.

Galvanized Carbon Steel BAND-IT Buckles

Package Quantity- 100

| Cat. No. | Width | | Weight | |
|----------|--------|-------|--------|-----|
| | Inches | mm | Lbs | Kg |
| C354 | 1/2 | 12.70 | 2.1 | 1.0 |
| C355 | 5/8 | 15.88 | 2.4 | 1.1 |
| C356 | 3/4 | 19.05 | 3.7 | 1.7 |

Galvanized Carbon Band available in plastic totes as special order



BAND-IT®
THE CLAMPING EXPERTS

BAND-IT Tool Tension Limiter

HD BAND-IT Tool



BAND-IT Tool

“Cool” Tool

A drop forged tool with tensioning capability of over 2,400 lbs. and a built-in cutter. New improved features include:

- A spring loaded gripper lever for improved band tensioning
- A friction held cutoff lever with plastic grip for easier operation
- A blue, epoxy powder coated finish virtually impervious to impact, chemicals and corrosive elements
- A spin handle retaining ring to keep parts intact. The BAND-IT Tool is used to apply BAND-IT Bands and Buckles, strapping and Free-End clamps.



Tension Limiter

Tension Limiter

Provides consistent, repeatable, foolproof clamp application. Set the BAND-IT Tension Limiter once for a particular size and application. From then on, when the same force is reached on successive clamps, a pin pops out to prevent over-tightening. Helps prevent improperly tightened clamps for increased safety, reduced liability. Fits BAND-IT C001 Tool and Jr. Tool. Adjustable for all Band and Buckle and Jr. Clamps from 1/4" to 3/4".



Heavy Duty BAND-IT Tool

HD BAND-IT Tool

For clamping applications requiring extra strength, the Heavy Duty BAND-IT Clamping System features Free-End Clamps with Ear-Lokt buckles which are quickly and easily applied with the C003 HD BAND-IT Tool. The Heavy Duty Clamping System is ideal for securing transformers, insulators, brackets, heavy signs and signals to steel and concrete poles.

The BAND-IT Tool (“Cool” Tool)

| Cat. No. | Description | Pkg Qty | Weight | |
|----------|--|---------|--------|-----|
| | | | Lbs | Kg |
| C001 | The BAND-IT Tool | 1 | 4.4 | 2.0 |
| C043 | Close Quarter Tension Nut Replaces tool tension handle when space is limited. | 1 | .16 | .07 |
| C006 | Tension Screw/Handle Kit | 1 | 1.23 | .56 |
| C016 | Bearing | 1 | .07 | .03 |

Tension Limiter

| Cat. No. | Description | Pkg Qty | Weight | |
|----------|-----------------------------------|---------|--------|-----|
| | | | Lbs | Kg |
| C065 | Provides consistent clamp tension | 1 | 1.0 | .45 |

Heavy Duty BAND-IT Tool

| Cat. No. | Description | Pkg Qty | Weight | |
|----------|-----------------|---------|--------|-----|
| | | | Lbs | Kg |
| C003 | Heavy Duty Tool | 1 | 5.1 | 2.3 |

Call Denver for replacement parts



Bantam Tool

Bantam Tool C075

The Bantam Tool C075 is designed for use in light duty banding applications such as sign hanging. With the unique 3-way handle, the Bantam Tool can be used in the pistol grip position for one-handed tensioning, or in the other positions for two-handed tensioning. It is especially useful in tight areas with minimal access. The Bantam Tool is a compact, lightweight, ratchet action tool with a built-in cutter. It has been designed for easy loading and removing of material, and is zinc plated for corrosion resistance. Tension release levers have been incorporated into the tool design for situations requiring repositioning of the band after tensioning has begun.



Ratchet Tool

C400 Ratchet Tool

Heavy duty windlass type tensioner for 3/8 to 3/4 stainless steel as well as carbon steel banding in thickness up to .030". Highly portable, fast, reliable ratchet type tool. For sign hanging, general applications and other banding applications.

Bantam Tool C075

| Cat. No. | Description | Weight | |
|----------|--|--------|-----|
| | | Lbs | Kg |
| C075 | 3-way handle version for one-hand pistol grip or two-hand tensioning | 2.6 | 1.2 |

Ratchet Tool

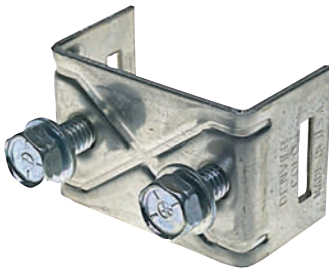
| Cat. No. | Description | Pkg Qty | Weight | |
|----------|--------------------------|---------|--------|-----|
| | | | Lbs | Kg |
| C400 | Band/buckle ratchet tool | 1 | 3.4 | 1.5 |



1-Bolt Straight Leg Brack-It



1-Bolt Flared Leg Brack-It



2-Bolt Brack-It



Mini-Brack-It



The UL4000 tool is ideal for municipal applications. (see page 1)

BAND-IT Sign Mounting Brack-Its

BAND-IT Sign Mounting Brack-Its are used to mount traffic signs securely with Ultra-Lok Free-end System, BAND-IT Band and Buckles, Valustrap Plus or Free-End clamps. These Brack-Its are reinforced with specially designed ribbing, for extra strength, to withstand stress and wind vibration. Brack-Its are available with or without bolts. The hex head bolts, with metal and fiber washer, require no nuts and are fully threaded to solidly anchor sign. Mini-Brack-Its are the economical choice when mounting small signs.

1-Bolt Straight Leg Brack-It

Package Quantity - 50
 .070" Thick 1.8 mm

| Cat. No. | Description | Weight | |
|----------|---|--------|-----|
| | | Lbs | Kg |
| D001 | Stainless Steel with SS Bolt, Washer and Fiber Washer | 7.3 | 3.3 |
| D004 | Stainless Steel, No Bolt or Washer | 5.9 | 2.7 |

1-Bolt Flared Leg Brack-It

.070" Thick 1.8mm Pkg. Qty - 50

| | | | |
|------|---|-----|-----|
| D021 | Stainless Steel with SS Bolt and Washer | 7.6 | 3.5 |
| D022 | Stainless Steel, No Bolt or Washer | 6.0 | 2.7 |

2-Bolt Brack-It

.070" Thick 1.8 mm Pkg. Qty - 50

| | | | |
|------|---|-----|-----|
| D008 | Stainless Steel with SS Bolts, Washer and Fiber Washers | 9.6 | 4.4 |
| D009 | Stainless Steel, No Bolts or Washers | 7.1 | 3.2 |

Bolts, Washers for Brack-Its

Package Quantity 50

| Cat. No. | Description | Weight | |
|----------|--|--------|-----|
| | | Lbs | Kg |
| D002 | Bolts Stainless Steel for Stainless Brack-Its (5/16-18 x 3/4" Long Hex Head) | 1.25 | .57 |
| D003 | Fiber Washers | .06 | .03 |

Mini-Brack-Its Stainless Steel

Package Quantity 50

| Cat. No. | (For 3/8" and 1/2" Width Band) Description | Weight | |
|----------|---|--------|-----|
| | | Lbs | Kg |
| D310 | Flared Leg (.050 Thick/1.3mm) with SS Bolt, Fiber Washer, 1/2" Slot | 3.2 | 1.5 |
| D315 | Straight Leg (.050 Thick/1.3mm) with SS Bolt, Fiber Washer, 1/2" Slot | 3.2 | 1.5 |
| D302 | Replacement Bolts - SS Bolt 5/16 - 24 x 1/2" Hex Head | .75 | .34 |

BAND-IT Bolt/Clamp Mounting Plate



BAND-IT Bolt/Clamp

BAND-IT Bolt/Clamp

An aluminum extruded housing with plated carriage bolt, nut and washer. To be used with BAND-IT Band.

Mounting Plate

An aluminum extruded plate with $\frac{5}{8}$ -11 x 2" (50.8mm) plated bolt and nut. Plate is available in two different sizes.



Mounting Plate

BAND-IT Bolt/Clamp

| Cat. No. | Description | Pkg Qty | Weight | |
|-------------|--|------------|--------|------|
| | | | Lbs | Kg |
| D500 | BAND-IT Bolt/Clamp™ for use with $\frac{3}{4}$ " (19.05 mm) width BAND-IT Band complete with plated nut, bolt $\frac{3}{8}$ -16 x 6" & washer. | 50 | 25 | 11.2 |
| D504 | BAND-IT Bolt/Clamp, for use with $1\frac{1}{4}$ " (31.75 mm) width BAND-IT Band. Complete with plated nut, bolt $\frac{5}{8}$ -11 x 8" & washer. | 25 | 31.3 | 14.6 |

Mounting Plate

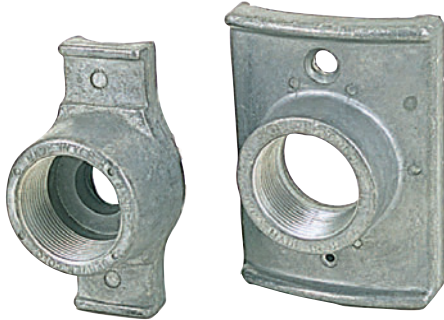
| Cat. No. | Description | Pkg Qty | Weight | |
|-------------|---|------------|--------|-----|
| | | | Lbs | Kg |
| D510 | Mounting Plate $1\frac{1}{2}$ " (38.1mm) x $4\frac{3}{4}$ " (120.7mm) with plated bolt (Grade 5, $\frac{5}{8}$ " (15.88mm) x 2" (50.8mm) | 25 | 15 | 6.8 |
| D512 | Heavy duty Mounting Plate $1\frac{1}{2}$ " (38.1mm) x $5\frac{1}{4}$ " (133.4mm) with plated bolt (Grade 5, $\frac{5}{8}$ " (15.88mm) x 2" (50.8mm) | 25 | 21.3 | 9.6 |
| D513 | Heavy duty Mounting Plate $1\frac{1}{2}$ " (38.1mm) x $5\frac{1}{4}$ " (133.4mm) with plated bolt (Grade 5, $\frac{5}{8}$ " (15.88mm) x 3" (50.8mm) | 25 | 21.3 | 9.6 |

Note: The Mounting Plate may be secured by using the BAND-IT Tool Band & Buckles.



BAND-IT®
THE CLAMPING EXPERTS

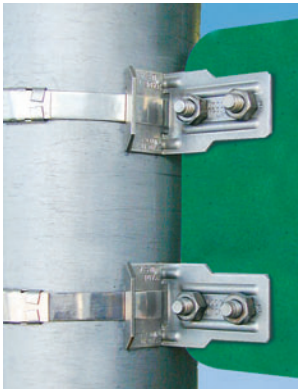
Signal Mounts L-Mounts



Signal Mounts



L-Mounts



Signal Mounts - Narrow Back and Standard

Aluminum die cast signal mount or pole plate for traffic signal lights, large cantilevered street signs, and other equipment. The radius of the standard signal mount accommodates a large range of pole diameters. The narrow back signal mount can be used on small diameter poles or for mounting on poles with flat surfaces. Attach to pole with $\frac{3}{4}$ " BAND-IT Stainless Steel Band and Buckles or with Ultra-Lok Free-End System.

L-Mounts

L-Mounts provide a solid anchor for signs mounted at right angles to the pole. Each L-Mount, .070" thick, has two bolt holes suitable for $\frac{5}{16}$ " or $\frac{1}{4}$ " bolts.

Signal Mounts

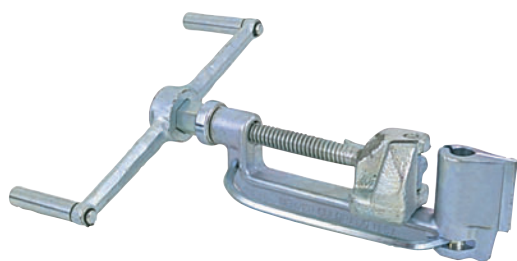
| Cat. No. | Description | Pkg Qty | Weight | |
|-------------|--|------------|--------|-----|
| | | | Lbs | Kg |
| D040 | Standard Signal Mount NPT 1 1/2" Dia | 25 | 19.8 | 9.0 |
| D041 | Standard Signal Mount NPSM 1 1/2" Dia | 25 | 19.8 | 9.0 |
| D045 | Narrow Back Signal Mounts NPT 1 1/2" Dia. | 25 | 19.3 | 8.8 |

L-Mounts - Right Angle Brack-Its

| Cat. No. | Description | Pkg Qty | Weight | |
|-------------|-------------------------|------------|--------|-----|
| | | | Lbs | Kg |
| D007 | Stainless Steel L-Mount | 50 | 4.8 | 2.2 |



Baked on colored finish available



Giant Tool

Giant Band

Giant Band is available in Type 201 stainless steel. It is used for heavy-duty clamping applications. Giant 1 1/4" band in 201 stainless steel has a breaking strength of 5,500 pounds. Double wrapped clamps are recommended for maximum strength.

Giant Utility Band

Giant Utility Band is available in Type 201 stainless steel with a matte (dull) finish. The matte finish is preferred by electric utilities who want stainless band to blend in with steel or concrete poles. It is used for heavy-duty clamping and has the same strength characteristics as our Giant Band with the bright finish.

Giant Buckles

Giant Buckles, Ear-Lokt, are offered in widths to correspond to Giant Band. Giant clamps may be double wrapped for extra strength.

Giant Tool

The Giant Tool must be used to apply heavy duty Giant clamps. Measuring 16 1/2" in length, it is designed to pull up to 6,000 pounds.

Giant Band

100 Ft. Per Roll (30.5M)

Type 201 Stainless Steel

| Cat. No. | Width | | Thickness | | Weight | |
|-------------|--------|-------|-----------|------|--------|-----|
| | Inches | mm | Inches | mm | Lbs | Kg |
| G430 | 3/4 | 19.05 | .044 | 1.12 | 11.6 | 5.4 |
| G431 | 1 | 25.40 | .044 | 1.12 | 13.7 | 6.4 |
| G432 | 1 1/4 | 31.75 | .044 | 1.12 | 17.2 | 8.0 |

Galvanized Carbon Steel available by special order.

Giant Utility Band

(Matte Finish)

Type 201 Stainless Steel

| | | | | | | |
|------|-------|-------|------|------|------|-----|
| G460 | 3/4 | 19.05 | .044 | 1.12 | 11.6 | 5.4 |
| G461 | 1 | 25.40 | .044 | 1.12 | 13.7 | 6.4 |
| G462 | 1 1/4 | 31.75 | .044 | 1.12 | 17.2 | 8.0 |

Giant Buckles

Package Quantity - 25

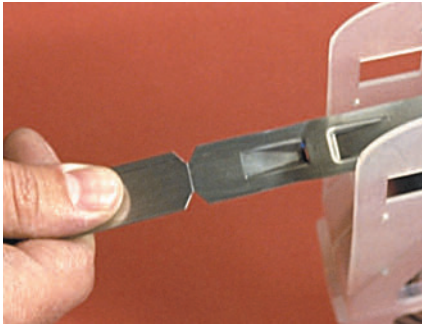
Type 201/301 Stainless Steel

| Cat. No. | Width | | Weight | |
|-------------|--------|-------|--------|-----|
| | Inches | mm | Lbs | Kg |
| G440 | 3/4 | 19.05 | 1.8 | .8 |
| G441 | 1 | 25.40 | 2.4 | 1.1 |
| G442 | 1 1/4 | 31.75 | 3.2 | 1.4 |

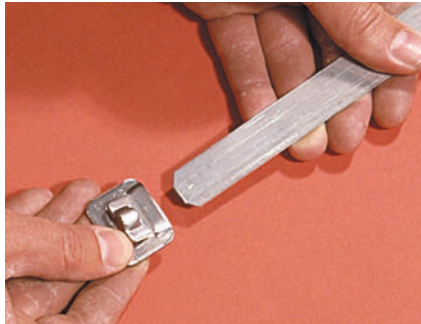
Giant Tool

| Cat. No. | Description | Pkg. Qty | Weight | |
|-------------|---|----------|--------|-----|
| | | | Lbs | Kg |
| G402 | Giant Tool | 1 | 11.7 | 5.3 |
| G414 | Giant Close Quarter Tension Nut Replaces tool tension handle when space is limited. | 1 | .39 | .18 |

Fast, Easy Reliable Band Clamping... in the Shop or in the Field!



1. Pull 3/4" band out from tote and snap off at score or remove from 1/2" Free End package.



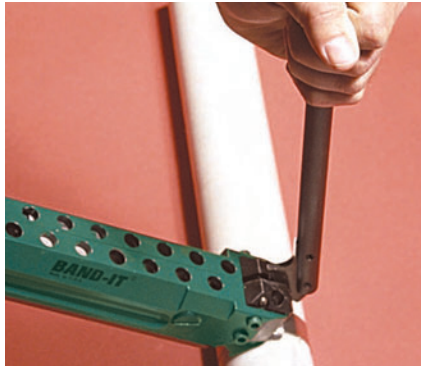
2. Match arrows on buckle and band. Slide buckle onto the preformed buckle nest at end of band.



3. After wrapping around object to be clamped, form clamp (single or double wrap)



4. Insert clamp tail into tool. Depress actuator switch. Proper tension has been reached when tool begins to ratchet.



5. No roll-up is necessary. Push cut-off handle forward to set lock under full band tension and cut-off tail simultaneously. Remove excess band from tool.



6. Tap down buckle to complete the lock.

Free-End

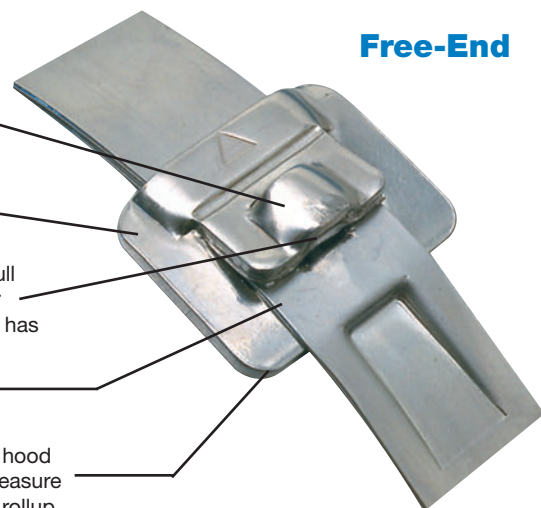
Unique buckle hood protects lock from shock and tampering.

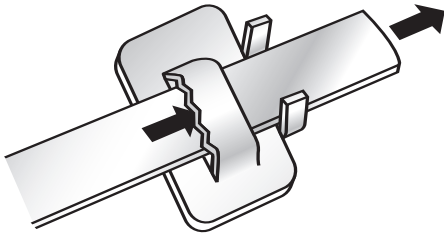
Extra thick earless buckle contributes to stronger clamps and vandal resistance.

Patented Ultra-Lok design locks under full pull-up tension and is 2-3 times stronger than conventional band clamps - impact has no effect on Ultra-Lok lock.

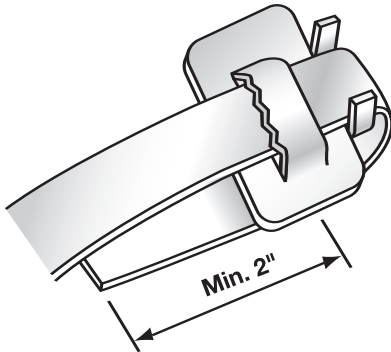
High Tensile .030 band thickness for extra strength.

Band is cut off flush with edge of buckle hood to prevent snags and provide an extra measure of safety by eliminating sharp edges. No rollup or ears to bend over.

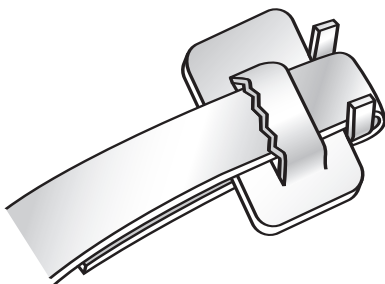




1. Pull appropriate length of band from BAND-IT Tote (approx. 3 1/2 times the diameter of the pole or mastarm for a single-wrapped clamp and seven times the diameter for a double-wrapped clamp. Add 6-8 inches for both single-wrapped and double-wrapped clamps to accommodate the tail and bracket design.) Cut the band using one of the BAND-IT tools with built-in cutter. One end of the band will be very flat and the opposite end will be slightly bent from the cut-off.



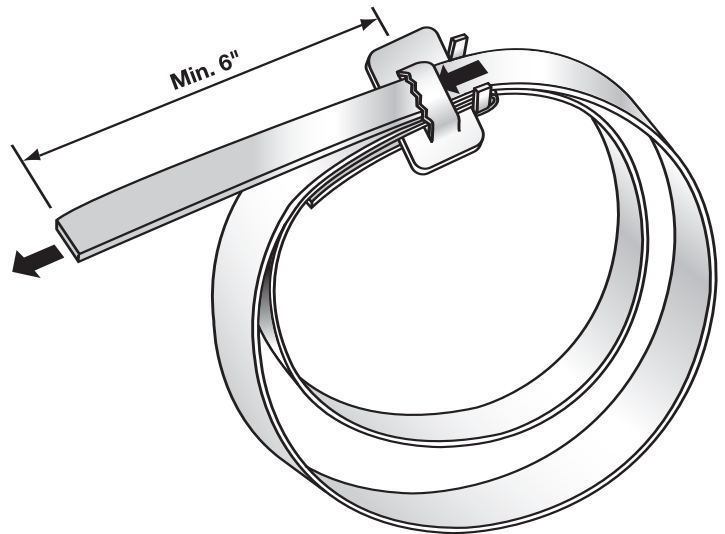
2. Holding the buckle in one hand, with ears pointing upward and to the right as shown, insert the bent or twisted end of the band through the buckle "bridge," past the ears and bend so that at least 2 inches are underneath the buckle.



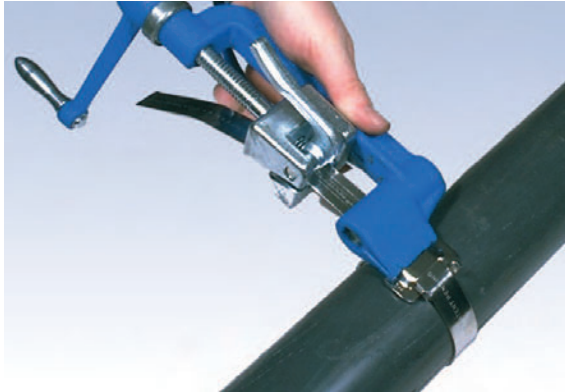
3. Squeeze this "lip wrap" to flatten the bend preventing "pull-out" during tensioning.



4. Wrap band through sign bracket and around the pole or mastarm and thread through bridge as shown.



5. Repeat a second wrap of band through the bracket and buckle for a continuous double-wrap application. Double-wrapping develops greater radial compression than single-wrapped clamps and more than doubles the holding strength for heavy objects and high wind loads.



6. Place band in open slot of tool nose and gripper block. Move into slot as far as possible to prevent buckle from sliding into tool nose. With thumb on band gripper lever, apply tension by turning handle of tool. After tension is created, it is no longer necessary to hold the band gripper lever as it locks itself under tension. When band stops moving through buckle, maximum tension has been applied. Stop turning handle.



7. To set the lock and cut off band, roll tool nose over buckle, relieving a slight amount of tension by backing off tension handle during this fold over operation. Failure to back off tension handle throughout the entire course of roll over may result in breaking band. On the other hand, releasing too much tension may result in a loose clamp.



8. Pull cutting handle to cut the band.



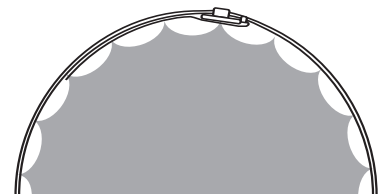
9. Remove tool, holding stub of band down with thumb.

10. Hold clamp tail down between ears while hammering the buckle ears down to hold band stub in place. This completes the secure BAND-IT clamp.

Fluted Pole Applications

When tensioning a conventional clamp over a fluted pole, it is necessary to extend the length of the "lip wrap" several inches to assure contact with

2 or 3 flute ridges. Also, buckle placement over a ridge is important to provide support for the lock and prevent the "lip wrap" from shifting.



Top View



Values Shown in Pounds

| Width Inches Thick | | 201 | | Stainless Steel | | | | Carbon Steel | |
|--------------------------|------|-------------------|-------------------|------------------------|------|----------|------|---------------------|-------|
| | | Annealed Force | 1/4 Hard Force | Valustrap Plus | | Valuband | | Thick | Force |
| 1/2 | .030 | 1500 | 1800 | .020 | 750 | .025 | 935 | .030 | 1125 |
| 5/8 | .030 | 1875 | – | .020 | 880 | .025 | 1170 | .030 | 1405 |
| 3/4 | .030 | 2250 | 2700 | .020 | 1125 | .025 | 1405 | .030 | 1690 |
| 3/4 | .044 | 3300 | – | – | – | – | – | .048 | 2700 |
| 1 | .044 | 4400 | – | – | – | – | – | .048 | 3600 |
| 1 1/4 | .044 | 5500 | – | – | – | – | – | .048 | 4500 |

Note to user concerning band strength. The table above shows the minimum force based on the nominal material size and minimum strength. The actual force required to break the band will likely be greater than these values.

Steel Specifications

Type 201 Stainless Steel

Type 201 is an austenitic chromium-nickel-manganese steel, with excellent tensile properties. It offers good resistance to oxidation and many mild to moderate corrosive agents. Type 201 is used where greatest strength is required. It is the BAND-IT material most commonly used.

1/4 hard 201 is used in Ultra-Lok Free-End Clamps for extra strength.

Austenitic Stainless Steel

Austenitic stainless steels are chromium-nickel-iron (series 300) or chromium-nickel-manganese-iron (series 200) alloys. Austenitic stainless steels are non-magnetic in the annealed condition but, depending on the composition (mainly the nickel and manganese content), they become slightly magnetic when cold worked. Austenitic stainless steel cannot be hardened by heat treating but only by cold working. They are the most popular grades of stainless steel due to their excellent formability and corrosion resistance.

Carbon Steel

Carbon steel used for BAND-IT band and clamps is a medium carbon (.43 to .60%) cold rolled strip coated with electrogalvanized zinc.

For further technical information regarding the physical properties of BAND-IT products, contact the Denver office.

Abbreviations

NPT - American Standard Taper Thread
 NPSC - National Pipe Straight Coupling
 NPSM - American Standard Straight Pipe Thread for Mechanical Joints
 M - Meter
 mm - Millimeter
 cm - Centimeter
 Kg - Kilogram
 SS - Stainless Steel
 ID - Inside Diameter
 OD - Outside Diameter
 UIC - Uniform Industrial Code
 GCS - Galvanized Carbon Steel

Patents

Many BAND-IT products shown herein are manufactured under one or more of the following U.S. and corresponding foreign patents owned by BAND-IT - IDEX, Inc., A Unit of IDEX Corporation. Other patents pending.

| | | | |
|-----------|-----------|-----------|-----------|
| 4,473,925 | 4,510,977 | 4,570,340 | 6,014,792 |
| 4,607,867 | 4,646,591 | 4,877,334 | |
| 4,896,402 | 4,928,738 | 5,123,456 | |
| 5,127,446 | 5,129,350 | 5,303,571 | |
| 5,322,091 | 5,452,523 | 5,483,998 | |
| 5,488,760 | 5,566,726 | 5,743,310 | |

BAND-IT®, BAND-IT Jr®, Junior®, Tri-Lokt®, Thriftool®, Tie-Lok®, Self-Lok®, Band-Lok®, Tie-LokTool®, Ultra-Lok® and Tie-Dex® are registered trademarks owned by BAND-IT - IDEX, INC., a Unit of IDEX Corporation.

BAND-IT trademarks are registered in the U.S. Patent and Trademark Office and in many other countries.

BAND-IT's UIC (Uniform Industrial Code) number is 662682.

BAND-IT's Commercial and Government Entity code (CAGE code) number is 70847.



Tie products listed with the CE mark are suitable for electric purposes and meet the requirements of (LVD) 73/23/EEC.



Underwriters Laboratories Listing BAND-IT - IDEX has UL Listings on the products indicated



Det Norske Veritas Type Approval BAND-IT Company Ltd, Derbyshire, has Det Norske Veritas Type Approval on the products indicated in the catalog certificate Number E-4464.



BAND-IT®
THE CLAMPING EXPERTS



**WORLD HEADQUARTERS &
WESTERN U.S. CUSTOMER
SALES & SERVICE CENTER**

BAND-IT - IDEX, INC.
A Unit of IDEX Corporation
4799 Dahlia St.
P.O. Box 16307
Denver, Colorado 80216-0307
U.S.A.

Ph: 303-320-4555
FAX 303-333-6549

info.BAND-IT@IDEXCORP.com

**EASTERN U.S. CUSTOMER
SALES & SERVICE CENTER**

BAND-IT - IDEX, INC.
A Unit of IDEX Corporation
3520 Progress Drive
Bensalem, Pennsylvania 19020
U.S.A.

Ph: 215-245-7290
FAX 215-245-7291

**BAND-IT CANADA
WAREHOUSE OPERATIONS**

Unit 3
2395 Drew Rd.
Mississauga, Ontario, Canada
L5S 1T2
Phone: (905) 677-1786
FAX: (905) 677-6916

EUROPEAN OPERATIONS

BAND-IT Company Limited
Speedwell Industrial Estate
Staveley, Nr. Chesterfield
Derbyshire, S43 3PF England
Ph: (44) 1246-477333
FAX (44) 1246-476324

**PACIFIC RIM OPERATIONS
BAND-IT Clamps (Asia) Pte. Ltd.**

11 Second Chin Bee Road
Singapore 618777
Phone: 65-6265-8853
65-6265-8783
FAX: 65-6265-8902

AFRICA OPERATIONS

BAND-IT R.S.A. (PTY) LTD
Unit No. 3
22 Buwbes Road
Sebenza Ext 1 Edenvale
PO Box 10240
Edenglen 1613
Ph: (27) 11 452-1288
FAX (27) 11 452-1287

visit our website:

www.BAND-IT-IDEX.com



© Copyright BAND-IT - IDEX, INC.
A Unit of IDEX Corporation
Denver, Colorado U.S.A. 2003. All rights reserved.